



Client / Operator : Ulstein Sea of Solutions / Petrofac  
 Project name : Design Pipelay / Heavy Lift Vessel  
 Period : Dec 2012 - Aug 2013  
 Category : Conceptual & Basic Design Support  
 Engineering and consultancy

### PROJECT DESCRIPTION

Ulstein Sea of Solutions requested assistance from The Offshore Partners to support the concept and basic design of the pipelay and lifting equipment, onboard the new construction vessel for Petrofac.

The mono-hull vessel was to be fitted with a 5,500t tub crane, S-lay and J-lay systems capable of pipeline installation down to 3000m water depth.

The under-deck pipe handling system was to be able to supply both pipelay systems consisting of single, double and quad joints.



### TECHNICAL DATA

#### Principal Particulars

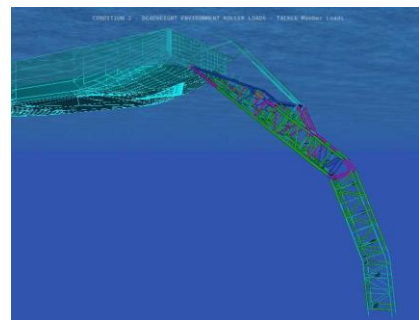
Length over all	: 210.34	m
Breadth over all	: 49.00	m
DP system	: DP3	-
Main crane	: 5,500	t
Accommodation	: 400	pers.

#### S-Lay

Pipe range	: OD 4.5 - 60	inch
Tension capacity	: 4 x 150	t
A&R capacity (Dyn.)	: 1x600 + 1x220	t
No. of workstations	: 13SJ, 7DJ or 3QJ	-
Operating depth	: 20 – 3,000	m

#### J-Lay

Pipe range	: OD 4 – 36	inch
Tension capacity	: 1200stat – 1500dyn	t
A&R capacity	: 1200	t
No. of workstations	: 1	-
Operating depth	: 3,000	m



### OUR SERVICES

The Offshore Partners provided the following services:

- Concept and Basic design support of the J-lay and S-lay pipe factories
- Supervise equipment tendering phase.
- Consultancy during stinger and stinger handling system design process.

